



How does a user not in the Exaquantum/Explorer Design Group load a specific document into Explorer?

Symptoms

When a user who is not in the QTM_EXPLORER_DESIGN_GROUP (Standard Model) or QExplorerDesignGroup (Legacy Model) starts Explorer it will always start with design mode disabled.

Prior to release R2.10.50 any attempt to use the command line options to specify a certain document or workbook to load initially, is ignored (see table 1-1 in section 1.7 of the Exaquantum Explorer User's Manual Volume 1). This was fixed in release R2.10.50. In all release since then it is possible for a user to use the command line to start Exaquantum/Explorer and load a specific workbook or document.

It is still true however that any user not in the Exaquantum/Explorer Design Group cannot load a workbook or document by just double clicking on a pxw or pxg file in Windows Explorer.

Clarification of the behavior

When a user who is not in the Exaquantum/Explorer Design Group starts Exaquantum/Explorer from the start menu or double clicks on a .pxw or .pxd file the Secure Workbook mechanism is used.

Note: In R2.10.50 and later releases of Exaquantum this mechanism can be overridden by using the command line options.

The Secure Workbook mechanism is documented in Section 8.4 of the Exaquantum Explorer User's Manual Volume 1.

The following situations should help to explain the mechanism involved. All are being performed by a user who is NOT in the Exaquantum Explorer Design Group.



1) A user wishes to load a single document. No secure workbook is configured.

In this situation Explorer will start with an empty screen as shown in Figure 1. The user can then use the Open command on the file menu to open any document or workbook that they require.

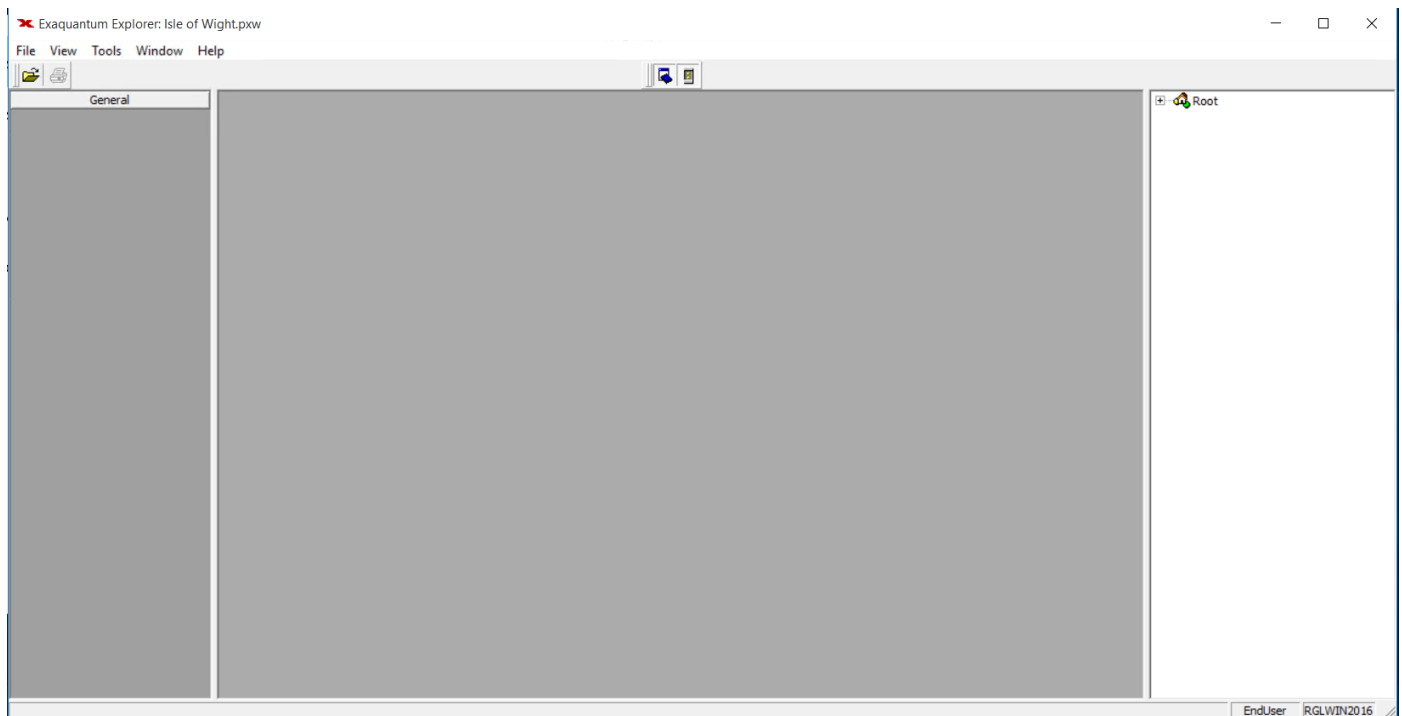


Figure 1 - Exaquantum Explorer SecureWorkbookLocation not set or no readable workbook

2) A user wishes to load a single document. The SecureWorkbookLocation is configured but does not contain an Explorer workbook.

The effect of this scenario is exactly the same as above. If no workbook exists in the SecureWorkbookLocation or the user does not have at least read access to any of the workbooks in that location then a screen similar to Figure 1 will again be displayed. The user is again free to load and close documents and workbooks to which he has read access.



3) A user wishes to load a single document. The SecureWorkbookLocation is configured and contains an Exaquantum/Explorer workbook. Runtime menus are available.

Under this scenario a workbook will be loaded but due to the fact that the File menu is still available it is possible to close this document and re-open any other workbook or document using the File menu (see Figure 2).

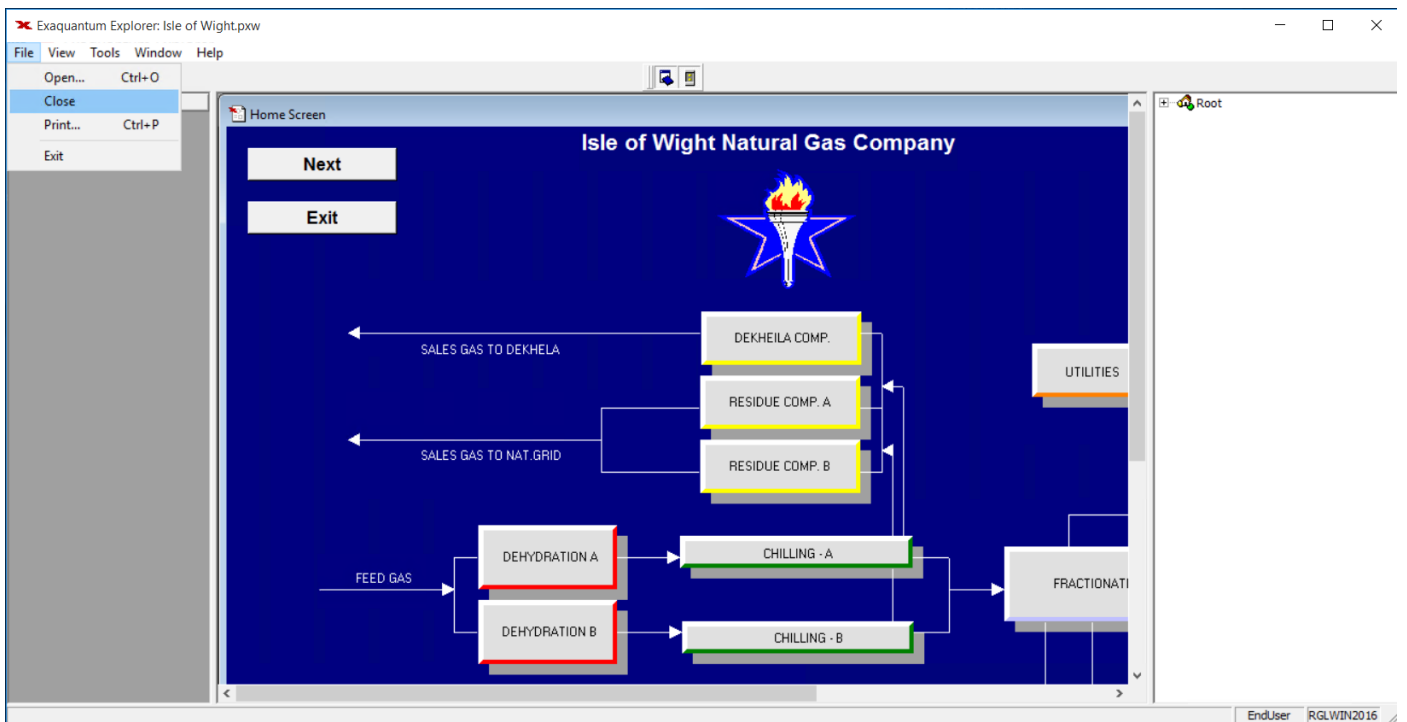


Figure 2 - Loaded workbook showing the File drop down menu

4) A user wishes to load a single document. The SecureWorkbookLocation is configured and contains an Exaquantum/Explorer workbook. Runtime menus are unavailable.

It is possible to remove Explorer menus in run time by disabling them in the workbook setup. This configuration gives maximum control to the system administrator and maximum restriction on the user. In this scenario the user is unable to open another document or perform any other action unless there is code in the loaded document. An example of Explorer when menus have been disabled in the workbook is provided in Figure 3.

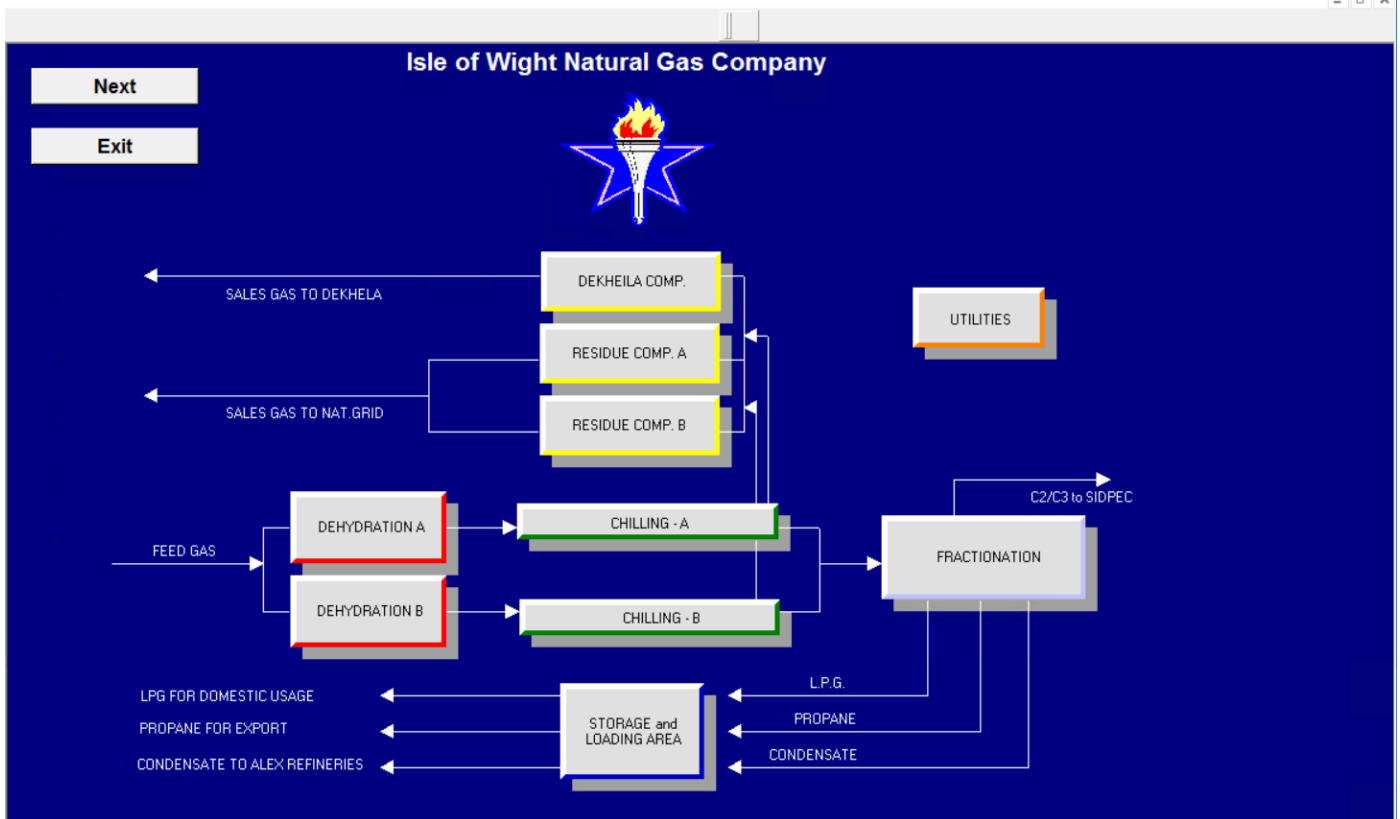


Figure 3 - Explorer example where the run time menus are disabled in the workbook properties

5) A user wants to load a specific document or different users require to load different reports (documents).

As the previous example shows, what happens at run time for users not in the Explorer Design Group depends on the configuration of the workbooks in the SecureWorkbookLocation.

The rule is that the first workbook to which the user has read access will be opened.

Which is defined as first when there is more than one depends on the collating sequence used to order the files.

This will be the default order used by Windows Explorer. Therefore, a user not in the Explorer Design Group does not have control over the document that is loaded at run time.



In the case of multiple workbooks the file permissions can be manipulated to ensure that the users open the correct workbook file.

Figure 4 shows the situation when there are two workbooks, both of which allow read access to the Exaquantum Read Group (QUserGroup in Legacy Model). There are two users, Operator1 and Operator2. Both users are in the Exaquantum Read Group and not the Explorer Design Group. The workbook Isle of Wight.pwx is the first in the list and would be the one loaded as in Figure 2.



Figure 4 - SecureWorkbookLocation showing two workbooks

The requirement is for the Operator1 user to load the second workbook (Isle of Wight2.pwx) during run time. This is achieved by amending the security settings for the first workbook as shown in Figure 4. The Exaquantum Read Group has access to the file but the user Operator1 has access explicitly denied.

When the Operator1 user starts Explorer the first workbook that the user has access to is Isle of Wight2.pwx and this is the workbook that will open.

Any other user not in the Explorer Design Group but in the Exaquantum Read Group will always load the Isle of Wight.pwx workbook file.